

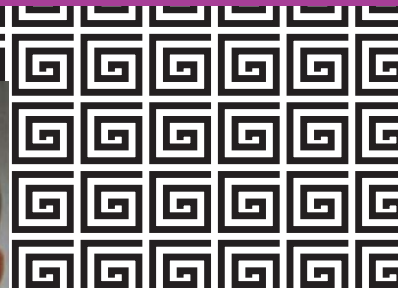


The Autism Center of New Jersey Medical School  
183 South Orange Avenue  
Behavioral Health Sciences Building Level F  
Newark, NJ 07103

Tel (973) 972-8930  
Fax (973) 972-0812  
[www.umdnj.edu/autismcenter](http://www.umdnj.edu/autismcenter)

## AUTISM BEYOND THE LABEL

February 9 & 10, 2007



The Autism Center of NJMS



**Course description:**

Our 2007 winter symposium focuses attention on what happens after the diagnosis of autism. Treatments often focus on educational components while families are left to care for their children's medical and emotional needs. Increasingly, alternative therapies are being pursued by families. We will discuss alternative therapies and put them into a medical perspective, which is so often lacking in the dialogue. We will also look at the role humor and nutrition play in health and wellness, both for ourselves and for our loved one with a disability. Lastly we will share the wisdom and insight of personal family stories.

About The Autism Center

The Autism Center of New Jersey Medical School is a coalition of researchers, clinicians, parents, educators, and service providers who work together to ameliorate the symptoms of autism spectrum disorders (ASD) in current and future generations, and to improve the quality of life of the growing number of persons affected by ASD. We accomplish this through our tripartite mission:

- Research to identify the causes of ASD and prevent future cases.
- Treatment to alleviate the symptoms of ASD.
- Outreach to provide systems of support for individuals with ASD, their families and the healthcare professionals who care for them.

The Autism Center (TAC) is located in Newark, New Jersey and serves as a much needed resource to local pediatricians, educators, day-care providers, school districts, parents and social service agencies, including the Division of Youth and Family Services. The families and children served by TAC face complicated and interconnected health, social, educational, behavioral and environmental problems, which are often exacerbated by family stress, abuse or neglect. A multidisciplinary team of clinicians provide in-depth evaluations. Our team includes members from developmental pediatrics, neurology, psychiatry, gastroenterology, genetics and child psychology. The Autism Center has continued to expand diagnostic and treatment services to children and adults in the greater Newark region. Many programs at TAC benefit from the participation of various social services and community organizations.

Alternative Therapies & Life lessons from a Medical Perspective



February 9 & 10, 2006

**Friday, February 9, 2006**

9:45 a.m. – 10:45 a.m. **Pediatric Grand Rounds for Professionals**  
Biomedical Intervention for Autism: The Paradigm Shift  
Nancy O'Hara, MD, MPH

11:00 a.m. – 11:45 a.m. **Tour The Autism Center (refreshments)**

**Saturday, February 10, 2006**

9:00 a.m. – 9:45 a.m. **Registration and continental breakfast**

9:45 a.m. – 10:15 a.m. **Welcoming Remarks**  
Barbie Zimmerman Bier, MD

10:15 a.m. – 11:30 a.m. **Keynote Address**  
Biomedical Intervention for Autism: The Paradigm Shift  
Nancy O'Hara, MD, MPH

11:30 a.m. – 12:00 p.m. **Q/A**

12:00 p.m. – 1:00 p.m. **Lunch (provided)**

1:00 p.m. – 2:00 p.m. **The magic of humor: A talk by noted humorist**  
Joe Cardone

2:00 p.m. – 2:15 p.m. **Q/A**

2:15 p.m. – 3:00 p.m. **Treating autism nutritionally**  
Peta Cohen MS RD, Founder of The Total Life Center

3:15 p.m. – 3:30 p.m. **Q/A**

3:30 p.m. – 3:45 p.m. **Break**

3:45 p.m. – 4:30 p.m. **Parent Perspectives**  
Jose Weis, RN; Sharon Teague, MSW; Toni Genovese

4:30 p.m. – 4:45 p.m. **Q/A**

4:45 p.m. – 5:00 p.m. **Closing Remarks**



Please Join The Autism Center for **Autism: Beyond The Label**  
UMDNJ-NJMS  
Medical Science Building  
185 South Orange Avenue  
Newark, NJ 07103